

# OAK CREEK FARMS

*Forage Developed Registered Fall Brangus Bull Sale*

**Saturday, October 28, 2023 • 12:30 pm**

Oak Creek Sale Facility, Chappell Hill, Texas

**50 Brangus and Red Brangus Bulls Sell**

**50+ Commercial Oak Creek Farm Heifers • Sell Following Bull Sale**

**Pre-Sale Activities Friday • Viewing of Bulls • Dr. Joe Paschal • 6 pm Cattlemen's Ribeye Steak Dinner**

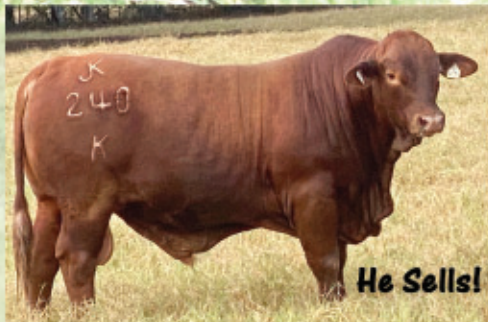
**Brangus on Forage • Low Maintenance Bulls • Excel in Carcass Quality**

**These are Conventional True Registered Brangus Cattle**

**Volume  
Discounts**

**LiveAuctions.TV**  
2.0

<https://liveauctions.tv>



**He Sells!**



**He Sells!**



**He Sells!**



## Why use TRUE Brangus?

True 3/8th x 5/8th Brangus were developed 70 years ago. They fit the environment better and thrive in the heat and still produce good, high-quality BEEF.

*Dr. Joe Paschal Emphasizes the Benefits of True Brangus.*

- True Brangus can take the heat...they have larger and more numerous sweat glands.
- Carcass Merit...120 OCF steers graded 95% Choice & Prime.
- Longevity...you can expect 1 to 2 more calves in their lifetime.
- Better Foragers...adapted to grazing on forage and shrubs.
- Increased Heterosis...growth enhanced by the stabilized 3/8 Bos Indicus in OCF's 3/8 x 5/8 Brangus resulting in better performance with less inputs.
- Higher Internal/External Parasite Tolerance...OCF in 8th year with no fly treatment!

These heifers sell open and ready to breed!

Show heifers and Fair Project Heifers also available!



*"Breeding Brangus Since 1967"*



**OAK CREEK FARMS**

**John & Carolyn Kopycinski**

**13750 FM 1371 • Chappell Hill, Texas 77426**

**979/836-6832 • oakcreekfarms@hughes.net**

**www.OakCreekFarms.com**

From Houston: 60 miles on Hwy 290 West, then 4 miles south on FM 1371.



**Our Top Coming Two-Year-Old Forage Tested OCF Bulls Will Sell!**

*Utilizing Ultrasound for 40 Years and DNA for 20 Years for Genetic Improvement*



# OAK CREEK FARMS

## Your Source for Forage Developed Bulls



John and Carolyn Kopycinski, owners of Oak Creek Farms in Chappell Hill, Texas



OCF Phenom 854G born 12/15/1996 was a first generation 3/8 Brahman x 5/8 Angus Bull with V8 and Williams Brahman breeding on his top side and Hoff's renowned Scotch Cap Angus Bull on his maternal side. The genetics of this iconic sire runs deep in Oak Creek Farms herd.

**WE HAVE BEEN BREEDING BRANGUS CATTLE AT OAK CREEK FARMS IN CHAPPELL HILL, TEXAS SINCE 1967.** Over a period of 50 plus years, we gradually built our herd to over 1,000 head of Brangus.

Through the years, we have worked diligently breeding cows that have good udders and calve every year without any problems. The cow must also raise its calf out in the pasture on forages without supplements until weaning in order to stay in the herd. After weaning, the calves are on a forage based diet.

We are constantly improving our genetics by having our heifers and first calf cows in an intensive AI program. We keep the top 50% of the heifer crop each year and cull the bottom 25% of the cows. Cattle are selected for phenotype, performance and fertility. These cows produce bulls that will pass on these traits to their progeny.

The Brangus breed's genetic makeup has advantages of the true conventional stabilized genetics of 3/8 Brahman x 5/8 Angus that thrive in our hot humid Gulf Coast Climate. Brangus express disease resistance, hardiness and maternal instincts from the Brahman and superior carcass qualities exhibited in Angus, including excelling in fertility, maternal and milking.

With the high cost of feed and fertilizer, the bull buyer is continuously demanding more forage efficient bulls. We do not treat cows with calves at side for flies and other parasites enabling the selection of the hardest animals and also allow beneficial insects to flourish, including some that aerate and increase fertilization in the soil naturally.

In order to get carcass trait information, we have utilized ultrasound technology for around 36 years to identifying intramuscular fat (IMF) and also DNA testing for 19 years for heritable traits. The bulls we have been using for about the last 25 years have IMF of about 4% or more. We had 120 calves at the feedlot that graded 47% premium choice, 45% choice and 3% prime from the harvest data.

The Brangus Bulls and Heifers in the Sale are a result of 56 years of breeding and producing forage efficient easy fleshing Brangus Cattle. **Please join us at Oak Creek Farms for our Forage Developed and Forage Tested Brangus Fall Bull and Commercial Heifer Sale on October 28, 2023 at the ranch in Chappell Hill, Texas.**

We look forward to seeing you at the Sale!

Carolyn and John Kopycinski

*Carolyn and John*

**OAK CREEK FARMS**



**John & Carolyn Kopycinski  
Chappell Hill, Texas 77426**

**979/836-6832 • oakcreekfarms@hughes.net  
www.OakCreekFarms.com**

From Houston: 60 miles on Hwy 290 West, then 4 miles south on FM 1371.

# GENERAL INFORMATION

## *Selling Coming Two-Year-Old Forage Tested OCF Bulls*

All Bulls are Oak Creek Farms Bred and Raised!

Also Selling 40+ Commercial Brangus and Red Brangus Heifers! Open and Ready to Breed.

### Saturday, October 28, 2023 • 12:30 pm CST

### Oak Creek Farms Sale Facility, Chappell Hill, Texas

## *Schedule of Events*

**Friday, October 27, 2023**

**2 pm** Cattle available for Viewing  
**6 pm** Cattlemen Ribeye Steak Dinner

**Saturday, October 28, 2023**

**8 am** Coffee and Kolaches  
Viewing of Cattle

*Followed by* Chappell Hill Bakery & Deli  
BBQ Lunch

**12:30 pm** Oak Creek Farms  
Forage Developed Bull Sale

*Followed by* Commercial Female Sale

### **Oak Creek Farms**

John & Carolyn Kopycinski  
(979) 836-6832 ~ (979) 251-0261, cell  
www.oakcreekfarms.com  
oakcreekfarms@hughes.net

**Bulls Selling** ~ 41 Coming Two-Year-Old Forage Tested OCF Bulls ~ Brangus, Red Brangus

**Commercial Females Selling** ~ 40+ Source Commercial Heifers including 15 Fair Project Open Heifers sell after the Bulls!

**Auctioneer** ~ Mark Switzer • (979) 885-2400

### **Sale Day Consultants** ~

Kelvin Mikolajchak • (979) 277-2906  
Mike Arnold, Superior L/S Rep • (979) 732-7679

### **Shipping/Hauling Arrangements** ~

Contact Oak Creek Farms

**Terms and Conditions** ~ Refer to page 12.

### **Sale Location**

Oak Creek Farms  
13750 FM 1371  
Chappell Hill, Texas 77426

### **Directions**

**From Houston:** Go about 60 miles on Hwy 290 West, then 4 miles south on FM 1371.

**From I-10:** At Sealy, north on Hwy 36 to Bellville, at Courthouse Square take FM 1456 7 miles north, then 4 miles on FM 1371.

**From Austin:** Take Hwy 290 East for about 100 miles until the intersection FM 1155 at Chappell Hill (there is a traffic light at the intersection). Go about 1 mile and then south 4 miles on FM 1371.



**Accommodations** ~ Please call Oak Creek Farms

### **Expected Progeny Differences (EPDs)**

The EPDs are pedigree EPDs and reflect October 2023 data.

**Health Requirements** ~ Cattle will be accompanied by proper health certificates for immediate shipment. **All bulls have Fertility, BVD and PI tested and have tested negative for Trichomoniasis.**

**Liability** ~ All persons attending the sale do so at their own risk, legal or otherwise, for their own safety or behavior of animals. OCF assume no liability for property loss or accidents that may occur.

**Health & Safety First** ~ Masks and Sanitizers will be available.

**SALE CARRIED LIVE** at [www.liveauctions.tv](http://www.liveauctions.tv)



# OAK CREEK FARMS

## *Back to the Basics on Forage*

**With the high cost of fuel and fertilizer, cattlemen are looking for a way to keep costs down and at the same time produce a better product.** Looking back about 75 years ago after World War II when fuel, fertilizer, and feed were cheap, ranchers began feeding cattle and feedlots came into being. In 1967 the Texas Cattle Feeders Association was formed. Before WWII cattle were developed mainly on forages.

However, in the last several years fuel and fertilizers have really increased in price and this past year prices have gone over the top. Producers have to find more economical ways to produce beef. Cattle that can gain on grasses without having to spend as much on fertilizer and feed will be more cost-efficient. Oak Creek Farms is developing its cattle on forages and selecting the cattle that do well in this hot humid environment. Oak Creek Farms forage-developed cattle helps keep inputs down.

"Also, you need to be careful of cattle that are in front of a feed trough too much of their life. These animals are not developed to make it on forages. I am selecting cattle that do the best on forages," says John Kopycinski.

"I think that cattle in our climate need to have more developed sweat glands and have less hair in this climate than those cattle further north. All of these factors are important when selecting and breeding cattle," says Kopycinski.

Foraged-developed bulls will not gain as much weight as they would if they were on full feed, but they will be in better condition and have increased reproductive efficiency along with increased libido. Commercial cattlemen need bulls that are ready to go and are accustomed to covering ground. A good bull does not need to be over-conditioned. He just needs to carry the genetics that will give his calves the ability to gain weight and finish.

As part of Oak Creek's straight-forward Total Herd Management Program, up to 25 percent of the cow herd is culled annually keeping the top end of the heifer crop to replace the culled mature cows. Cattle are selected for phenotype

---

*Kopycinski is always looking for ways to get back to the basics and has discovered that by not treating the cows with calves at side for flies and parasites, the hardier animals will stand out plus the dung beetle population flourishes in those pastures. When dung is buried by the beetles, nitrogen loss is 20% with 80% being placed in the grass root zone aerating and improving the soil naturally.*

---

and performance plus fertility. With the high cost of feed and fertilizer, the bull buyer is demanding more forage-efficient bulls. Kopycinski's interest in efficiency and conservation practices led him to initiate Oak Creek's Grass/Forage program. Kopycinski is always looking for ways to get back to the basics and has discovered that by not treating the cows with calves at side for flies and parasites, the hardier animals will stand out plus the dung beetle population flourishes in those pastures. When dung is buried by the beetles, nitrogen loss is 20% with 80% being placed in the grass root zone aerating and improving the soil naturally.

Forage-developed cattle and using ultrasound and DNA results for marbling and tenderness help Kopycinski in selecting the best cattle to keep in the herd. Using genetics that thrive on forages and also produce an



# FORAGES AND GENETIC TESTING

## *Key to Building a Solid Program at OC7*

**Today's high input cost for developing cattle is a real concern to the American cattleman.** Oak Creek Farms in Chappell Hill, Texas has implemented a program to raise cattle as economically as possible. Forages are the foundation of their program.

John and Carolyn Kopycinski, owners of Oak Creek Farms located about 60 miles northwest of Houston run Brangus Cows in the Brazos River bottom. All of their cattle are developed on forages in the Gulf Coast area where it gets hot and humid. They have a center pivot that irrigates up to 155 acres so they have forages in reserve in the form of hay and good quality Wrapped Balage. The cattle thrive on forages which they believe is the only way to make a profit in today's market atmosphere with the high input cost.

At weaning our forage-developed bulls receive a limiter. At sale time the bulls will not be very fat, but they will be in good physical condition and will be ready to go to work. "The bulls are being conditioned for efficiency and heat tolerance. Kopycinski says, "They do not get any shade until the temperature gets over 90 degrees." He calls this part of the forage test, the stress test. He also adds, "The reason we test the bulls in the hot summertime is that it allows us to test their heat tolerance and see if they have well-developed sweat glands that they need in this part of the country. Bulls that can't take the heat are eliminated." He said to remember that just because a bull has a smaller frame does not mean he is more forage-efficient or heat-tolerant.

Breeders have to look at the bull's performance and his genetic data collectively. Kopycinski referred to Dr. Jan Bonsma who did a lot of studies in the 1950s. Bonsma said that an animal has to be happy in their environment, meaning that they have to be able to survive and thrive.

Referring back to forages, Kopycinski notes, "We have found that Tifton 85 works the best by far. We will start with over 200 bulls on 35 acres and they never run out of forages in this system. We use nitrogen to fertilize the Tifton 85 in the summertime. The bulls will recycle some fertilizer back on the land. We use a supplemental limiter to develop the bulls because here in the Gulf Coast region our grasses are not as strong as they are further north. You have to know your environment."

Some of the forages used are Tifton 85, Jiggs and common Bermuda grass on the improved pasture. In the native pastures, he has some native bluestem and Bahia. He says that the legumes that work in his environment are burr clovers, ball clover, Persian clover, and Bigbee Burseem. He tries to center his breeding season around legumes to help cows rebreed. The bonus is that clovers can obtain nitrogen from the atmosphere and "fix" it in nodules on its roots called nitrogen fixation. Oak Creek Farms endeavors to improve the environment and produce environmentally friendly cattle.



# OAK CREEK FARMS

## *About Our Program...*

### **Total Herd Management Program Producing Forage Efficient Cattle with Desirable Carcass Traits**

Oak Creek Farms has been a grass-based operation breeding registered Brangus and Red Brangus since 1967, however, the Kopycinski family has been in agriculture for more than 100 years in Austin and Washington counties in south central Texas. Oak Creek is in the business of producing forage-efficient, easy fleshing registered Brangus cattle that have desirable carcass traits.

John Kopycinski, the owner, says that he produces medium-framed, well-balanced cattle that thrive on forages and are heat tolerant. In south central Texas cattle experience extreme heat and humidity, and Oak Creek's Brangus cattle must be able to thrive in these conditions. Cows must also have good udders and be fertile to stay in the herd. They must calve every year without calving problems and be able to raise the calf out in the pasture on forages without being supplemented. "Our cattle are raised and developed on forages," says Kopycinski. As part of his total management program, he culls about 25 percent of his herd each year so that he is constantly improving the genetics of his cattle.

"Selecting and identifying bulls with favorable carcass traits for tenderness and marbling, plus identifying feed efficiency traits are key components in our registered Brangus herd," says John and his wife, Carolyn. Oak Creek is home to approximately 1000 head of registered Brangus and Red Brangus cattle. He has been DNA testing his bulls for the last six years using the results in management and breeding decisions.

"Our goal is to raise cattle that produce tender, juicy beef that people enjoy eating," says John Kopycinski. To market their bulls, Oak Creek Farms has their annual Forage Tested Registered Bull Sale each October that attracts buyers from Texas and across the nation. "Each year our customers become more interested in our forage-based program along with the DNA testing results. Buyers will be able to use the information to select bulls that will best fit their ranch program," explains Kopycinski. The bulls have also been ultrasounded and fertility tested. "We want to give the buyer as much information as we can so that he can make an informed decision, and we also want to be sure that the bull is ready to go to work when he gets to his new home."

All sale bulls are OCF bred and developed at Oak Creek Farms in the hot and humid Gulf Coast area. Over 200 bulls begin the forage test each year, and about 50 will make the spring sale, and 55 sell in the sale held toward the end of October.

### *OCF Your Brangus Source*

- OCF Brangus has the superior traits of Angus and Brahman cattle
  - Genetics stabilized at 3/8 Brahman and 5/8 Angus
  - Traits for disease resistance, hardiness and maternal instincts from the Brahman
- Not treated for parasites or flies while calf at cow's side
  - Superior carcass qualities and females excelling in fertility and milking from the Angus
    - Resistant to heat and high humidity
    - Produce enough hair for cold climates

#### **EXCELS IN CARCASS QUALITY**

Produces Restaurant Quality Beef up to 95% Choice and Prime

Harvest Data on 120 OCF Brangus steers and heifers:

47% Premium Choice • 45% Choice • 3% Prime

We have been using ultrasound for 49 years and DNA for heritable traits for 19 years for selecting cattle that improves herd genetics.

*Oak Creek Farms is home to more than 1,000 head of registered cattle including Brangus and Red Brangus. Breeding cattle has been our business since 1967.*

*Our goal then and our goal now is breeding cattle that are exceptional both in performance and quality. We utilize the latest technology including ultrasound and DNA testing to determine marbling and tenderness.*

*The beef industry has evolved to value-based marketing and Oak Creek's years of experience in the selection of superior, efficient cattle has resulted in producing uniform, low maintenance, high performing cattle that grade well and meet the industry's demands. We forage test our bulls so that when we sell them they will be ready to go straight from our pasture to the buyer's pasture and be ready to go to work, plus with forage testing, we can evaluate the cattle and select cattle that are more adaptable to our hot humid environment. Cattle raised on forage are more cost-efficient, and we along with many of our customers observe that these forage-tested bulls have a lot of staying power out in the pasture because that is how they were developed.*

*Developing cattle on forage ensures the best overall performance and quality of the animal. High volume, fertile cattle that have clean lines, good bone and muscle, good udders on cows, and good testicles on bulls are important to all cattle breeders and producers. Over the years we have been able to select cow families that have these qualities and are good producers and performers. In addition to raising a marketable calf each year, our females have to meet two criteria including calving ease and good udders. These qualities ensure that the cow will be in production for years.*



**Lot 1 OCF 464K BRANGUS K**  
**R10537057 Born: 2/11/22 PHN: 464K P Gen: 3**

OCF 915A80 SKYHAWKS PRESIDENTE  
 OCF 332E R10394630 MISS JLS ROSE 915X4  
 MISS OAK CREEK 403C OCF 576X  
 OCF 810B MISS OAK CREEK 525Z  
 MISS OAK CREEK 467D R10537051 OCF 805W  
 MISS OAK CREEK 830W  
 MISS OAK CREEK 518P OCF 227K  
 MISS OAK CREEK 535K

CED	BW	WW	YW	MILK	TM	CEM	SC	REA	IMF	FT	Hfr Prg	Stay	Cow Wt
4.1	1.4	8	2	7	11	-	0.4	-0.01	-0.06	-0.012	2.24	0.89	-2.3

*Excels in Performance • Enviroment Friendly • Stayability  
 Dam Calves Unassisted Yearly to Stay in Herd*



**Lot 2 OCF 596K BRANGUS K**  
**R10532385 Born: 2/16/22 PHN: 596K P Gen: 3**

OCF 915A80 SKYHAWKS PRESIDENTE  
 OCF 505G R10452250 MISS JLS ROSE 915X4  
 MISS OAK CREEK 421Z OCF 557U  
 MISS OAK CREEK 44R  
 OCF 810B OCF 805W  
 MISS OAK CREEK 320D R10471713 MISS OAK CREEK 830W  
 MISS OAK CREEK 483B OCF 399T BN  
 MISS OAK CREEK 396T

CED	BW	WW	YW	MILK	TM	CEM	SC	REA	IMF	FT	Hfr Prg	Stay	Cow Wt
4.4	1.2	3	11	7	8	-	0.32	0.03	0.03	-0.004	2.13	0.78	-2.02

*Excels in Performance • Enviroment Friendly • Stayability  
 Dam Calves Unassisted Yearly to Stay in Herd*



**Lot 3 OCF 527K BRANGUS K**  
**R10522095 Born: 12/1/21 PHN: 527K P Gen: 2**

OCF 915A80 SKYHAWKS PRESIDENTE  
 OCF 505G R10452250 MISS JLS ROSE 915X4  
 MISS OAK CREEK 421Z OCF 557U  
 MISS OAK CREEK 44R  
 OCF 836U OCF 860R  
 MISS OAK CREEK 308X R10517922 MISS OAK CREEK 856L  
 MISS OAK 829N DAVIDS OSCAR 995  
 MISS OAK CREEK 854L

CED	BW	WW	YW	MILK	TM	CEM	SC	REA	IMF	FT	Hfr Prg	Stay	Cow Wt
3.6	1.3	5	15	9	12	-	0.39	0.12	0.09	0.006	2.67	1.15	-0.46

*Excels in Performance • Enviroment Friendly • Stayability  
 Dam Calves Unassisted Yearly to Stay in Herd*



**Lot 4 OCF 301K BRANGUS K**  
**R10532461 Born: 1/26/22 PHN: 301K P Gen: 4**

OCF 915A80 SKYHAWKS PRESIDENTE  
 OCF 332E R10394630 MISS JLS ROSE 915X4  
 MISS OAK CREEK 403C OCF 576X  
 MISS OAK CREEK 525Z  
 OCF 76E OCF 512A  
 MISS OAK CREEK 200H RR10532451 MISS OAK CREEK 81U  
 MISS OAK CREEK 249E OCF 576X  
 MISS OAK CREEK 42W

CED	BW	WW	YW	MILK	TM	CEM	SC	REA	IMF	FT	Hfr Prg	Stay	Cow Wt
5.1	1	7	15	6	10	-	0.52	0.07	0.02	0.009	1.69	0.61	-2.86

*Excels in Performance • Enviroment Friendly • Stayability  
 Dam Calves Unassisted Yearly to Stay in Herd*





**Lot 5 OCF 781K BRANGUS K**  
**R10537699 Born: 2/16/22 PHN: 781K P Gen: 6**

**OCF 516F** R10468597 OCF 915A80 SKYHAWKS PRESIDENTE  
 MISS JLS ROSE 915X4  
 MISS OAK CREEK 481B OCF 557U  
 MISS OAK CREEK 148Z  
 STONEWALL OF RRR 222W6 CSONKA OF BRINKS 30R4  
**MISS OAK CREEK 338G** R10537585 MS BRINKS LOMBARDI 222S20  
 MISS OAK CREEK 513E OCF 401B  
 MISS OAK CREEK 221Y

CED	BW	WW	YW	MILK	TM	CEM	SC	REA	IMF	FT	Hfr	Prg	Stay	Cow Wt
5.4	0.6	-3	6	7	5	-	0.58	0.2	0.33	0.025	3.24	0.72	-7.33	

*Excels in Performance • Enviroment Friendly • Stayability  
 Dam Calves Unassisted Yearly to Stay in Herd*



**Lot 6 OCF 467K BRANGUS K**  
**R10537106 Born: 1/5/22 PHN: 467K P Gen: 5**

**IH MR. ISMAEL 820G3** R10412821 IH BAR NONE 820Y8 CHIEF OF INDIAN HILLS 23P68  
 MS 38 CENTER RANCH 820/M38  
 IH MS CHIEF 820X15 CHIEF OF INDIAN HILLS 23P68  
 MS EQUALIZER Z15 OF LA TERRE  
 OCF 399T BN OCF 242N  
**MISS OAK CREEK 445B** R10450758 MISS OAK CREEK 527H  
 MISS OAKCREEK 194R OCF 507M  
 MISS OAK CREEK 544N

CED	BW	WW	YW	MILK	TM	CEM	SC	REA	IMF	FT	Hfr	Prg	Stay	Cow Wt
3.8	1.7	19	48	5	15	4.44	0.07	0.28	-0.15	-0.012	0.83	0.6	-0.25	

*Excels in Performance • Enviroment Friendly • Stayability  
 Dam Calves Unassisted Yearly to Stay in Herd*



**Lot 7 OCF 537K BRANGUS K**  
**R10522053 Born: 12/24/21 PHN: 537K P Gen: 3**

**OCF 505G** R10452250 OCF 915A80 SKYHAWKS PRESIDENTE  
 MISS JLS ROSE 915X4  
 MISS OAK CREEK 421Z OCF 557U  
 MISS OAK CREEK 44R  
 OCF 810B OCF 805W  
**MISS OAK CREEK 301D** R10421369 MISS OAK CREEK 830W  
 MISS OAK CREEK 402B OCF 399T BN  
 MISS OAK CREEK 527T

CED	BW	WW	YW	MILK	TM	CEM	SC	REA	IMF	FT	Hfr	Prg	Stay	Cow Wt
4.7	1	10	22	8	13	-	0.28	0.1	0.03	0	1.87	0.7	-2.65	

*Excels in Performance • Enviroment Friendly • Stayability  
 Dam Calves Unassisted Yearly to Stay in Herd*



**Lot 8 OCF 317K BRANGUS K**  
**R10534797 Born: 2/17/22 PHN: 317K P Gen: 5**

**GR SWIFT 209W3** R10143304 LAMBERT OF BRINKS 317R3 LEAD GUN OF BRINKS 222K14  
 MS BRINKS GOOD FORTUNE 317M  
 MS BRINKS BRIGHT SIDE 209L11 BRIGHT SIDE OF BRINKS 789G5  
 MISS BRINKS NEWSDAY 209G9  
 OCF 706E OCF 915A80  
**MISS OAK CREEK 458H** R10534780 MISS OAK CREEK 335W  
 MISS OAK CREEK 573X OCF POWERSURGE 34S  
 MISS OAK CREEK 500K

CED	BW	WW	YW	MILK	TM	CEM	SC	REA	IMF	FT	Hfr	Prg	Stay	Cow Wt
5.6	0.6	22	38	6	17	2.94	0.44	0.29	0.04	0	3	0.25	-2.85	

*Excels in Performance • Enviroment Friendly • Stayability  
 Dam Calves Unassisted Yearly to Stay in Herd*



**Lot 9 OCF 512K BRANGUS K**  
**R10522087 Born: 11/15/21 PHN: 512K P Gen: 5**

OCF 302C CRC LANDAU 263X2  
 OCF 361F R10421920 MISS OAK CREEK 500A  
 MISS OAK CREEK 407C OCF 576X  
 OCF 455S MISS OAK CREEK 431Z  
 MISS OAK CREEK 504Z R10319468 OCF 507M  
 MISS OAK CREEK 541U MISS OAK CREEK 573M  
 OCF TRANSFORMER 27N14  
 MISS OAK CREEK 109L

CED	BW	WW	YW	MILK	TM	CEM	SC	REA	IMF	FT	Hfr Prg	Stay	Cow Wt
5.3	1.2	6	19	8	11	3.54	0.45	-0.04	-0.02	0	1.63	0.31	-0.86

*Excels in Performance • Enviroment Friendly • Stayability  
 Dam Calves Unassisted Yearly to Stay in Herd*



**Lot 10 OCF 38K BRANGUS K**  
**R10534215 Born: 1/28/22 PHN: 38K P Gen: 5**

OCF 915A80 SKYHAWKS PRESIDENTE  
 OCF 327F R10421911 MISS JLS ROSE 915X4  
 MISS OAK CREEK 450D OCF 820A2  
 OAK CREEK TARGET 2S MISS OAK CREEK 67N  
 MISS OAK CREEK 132Y RR10394990 MISS OAK CREEK 8N2  
 MISS OAK CREEK 204P MISS OAK CREEK 196M  
 OCF 11L  
 MISS OAK CREEK 100M

CED	BW	WW	YW	MILK	TM	CEM	SC	REA	IMF	FT	Hfr Prg	Stay	Cow Wt
4.2	1.2	9	22	5	10	3.45	0.55	-0.2	0.09	0	1.71	0.53	-4.26

*Excels in Performance • Enviroment Friendly • Stayability  
 Dam Calves Unassisted Yearly to Stay in Herd*



**Lot 11 OCF 545K BRANGUS K**  
**R10537147 Born: 1/16/22 PHN: 545K P Gen: 3**

OCF 915A80 SKYHAWKS PRESIDENTE  
 OCF 505G R10452250 MISS JLS ROSE 915X4  
 MISS OAK CREEK 421Z OCF 557U  
 MISS OAK CREEK 44R  
 OCF 810B OCF 805W  
 MISS OAK CREEK 443D R10419369 MISS OAK CREEK 830W  
 MISS OAK CREEK 528R OCF PHENOM'S 518N  
 MISS OAK CREEK 519N

CED	BW	WW	YW	MILK	TM	CEM	SC	REA	IMF	FT	Hfr Prg	Stay	Cow Wt
3.9	1.5	10	20	8	13	-	0.4	0.08	0.04	0	2.69	1.02	-0.74

*Excels in Performance • Enviroment Friendly • Stayability  
 Dam Calves Unassisted Yearly to Stay in Herd*



**Lot 12 OCF 781K1 BRANGUS K**  
**R10537357 Born: 2/23/22 PHN: 781K1 P Gen: 6**

SKYHAWKS PRESIDENTE MR CR FRED 99/N26  
 OCF FORAGER 352F R10462567 SVF-D BAR D MS ALICE  
 MISS OAK CREEK 581D OCF 915A80  
 MISS OAK CREEK 575W  
 STONEWALL OF RRR 222W6 CSONKA OF BRINKS 30R4  
 MISS OAK CREEK 313G R10505196 MS BRINKS LOMBARDI 222S20  
 MISS OAK CREEK 731E OCF 501Z  
 MISS OAK CREEK 247P

CED	BW	WW	YW	MILK	TM	CEM	SC	REA	IMF	FT	Hfr Prg	Stay	Cow Wt
3.8	1	10	29	3	9	3.17	0.66	0.32	0.26	0.032	3.55	0.74	-11.68

*Excels in Performance • Enviroment Friendly • Stayability  
 Dam Calves Unassisted Yearly to Stay in Herd*

**Lot 13 OCF 440K BRANGUS K**  
**R10521871 Born: 12/15/21 PHN: 440K P Gen: 5**

TDR JOHN WAYNE 302R TJM JOHN WAYNE 44L  
 OCF 760F R10422255 MB MS MOTASH 302N7  
 MISS OAK CREEK 423A BRINKS LAMBERT 468X  
 MISS OAK CREEK 402T  
 OCF 576X OCF POWERSURGE 34S  
 MISS OAK CREEK 440C R10478489 MISS OAK CREEK 108R  
 MISS OAK CREEK 568T OCF TRANSFORMER 27N14  
 MISS OAK CREEK 561K

CED	BW	WW	YW	MILK	TM	CEM	SC	REA	IMF	FT	Hfr Prg	Stay	Cow Wt
5.7	1	11	26	6	12	-	0.36	-0.05	0	-0.003	2.04	0.88	-2.08

*Excels in Performance • Enviroment Friendly • Stayability  
 Dam Calves Unassisted Yearly to Stay in Herd*

**Lot 14 OCF 714K BRANGUS K**  
**R10522164 Born: 8/28/21 PHN: 714K P Gen: 2**

IH RUDDER 504Y2 CHIEF OF INDIAN HILLS 23P68  
**IH MR. RUDDER 804F** R10379451 MS BRINKS ALI 504P12  
 IH KENADY 804X IH LEAD GUN 23U  
 OCF 805W IH MS LEAD GUN 804U  
**MISS OAK CREEK 822B** R10491013 OCF 589M  
 MISS OAK CREEK 961S MISS OAK CREEK 841P  
 OCF 589M  
 MISS OAK CREEK 806K

CED	BW	WW	YW	MILK	TM	CEM	SC	REA	IMF	FT	Hfr Prg	Stay	Cow Wt
5	0.4	19	37	9	18	4.33	0.32	0.23	0.16	0.011	2.09	1.18	1.55

*Excels in Performance • Enviroment Friendly • Stayability  
 Dam Calves Unassisted Yearly to Stay in Herd*

**Lot 15 OCF 768K BRANGUS K**  
**R10537285 Born: 1/8/22 PHN: 768K P Gen: 3**

OCF 915A80 SKYHAWKS PRESIDENTE  
**OCF 332E** R10394630 MISS JLS ROSE 915X4  
 MISS OAK CREEK 403C OCF 576X  
 MISS OAK CREEK 525Z  
 OCF 800B OCF 805W  
**MISS OAK CREEK 481E** R10537265 MISS OAK CREEK 810W  
 MISS OAK CREEK 453A BRINKS LAMBERT 468X  
 MISS OAK CREEK 54P

CED	BW	WW	YW	MILK	TM	CEM	SC	REA	IMF	FT	Hfr Prg	Stay	Cow Wt
4.7	1.1	11	19	8	14	-	0.42	0.24	0.2	0.012	2.3	0.89	-3.56

*Excels in Performance • Enviroment Friendly • Stayability  
 Dam Calves Unassisted Yearly to Stay in Herd*

**Lot 16 OCF 323K BRANGUS K**  
**R10536910 Born: 3/16/22 PHN: 323K P Gen: 3**

GR SWIFT 209W3 LAMBERT OF BRINKS 317R3  
**OCF 714H** R10468192 MS BRINKS BRIGHT SIDE 209L11  
 MISS OAK CREEK 474D OCF 820A2  
 MISS OAK CREEK 425Z  
 OCF 332E OCF 915A80  
**MISS OAK CREEK 402H** R10536902 MISS OAK CREEK 403C  
 MISS OAK CREEK 879B OAK CREEK 815U  
 MISS OAK CREEK 847T

CED	BW	WW	YW	MILK	TM	CEM	SC	REA	IMF	FT	Hfr Prg	Stay	Cow Wt
4.6	1.2	16	29	7	16	-	0.33	0.14	0.05	0.003	2.4	0.48	-2.75

*Excels in Performance • Enviroment Friendly • Stayability  
 Dam Calves Unassisted Yearly to Stay in Herd*

**Lot 17 OCF 583K BRANGUS K**  
**R10537242 Born: 2/4/22 PHN: 583K P Gen: 3**

OCF 915A80 SKYHAWKS PRESIDENTE  
**OCF 516F** R10468597 MISS JLS ROSE 915X4  
 MISS OAK CREEK 481B OCF 557U  
 MISS OAK CREEK 148Z  
 OCF 810B OCF 805W  
**MISS OAK CREEK 553D** R10463561 MISS OAK CREEK 830W  
 MISS OAK CREEK 535Z OCF 455S  
 MISS OAK CREEK 70R

CED	BW	WW	YW	MILK	TM	CEM	SC	REA	IMF	FT	Hfr Prg	Stay	Cow Wt
5.2	0.7	3	14	7	8	-	0.38	0.02	0.2	0.006	2.23	0.85	-2.87

*Excels in Performance • Enviroment Friendly • Stayability  
 Dam Calves Unassisted Yearly to Stay in Herd*

**Lot 18 OCF 329K BRANGUS K**  
**R10536916 Born: 3/24/22 PHN: 329K P Gen: 6**

GR SWIFT 209W3 LAMBERT OF BRINKS 317R3  
**OCF 714H** R10468192 MS BRINKS BRIGHT SIDE 209L11  
 MISS OAK CREEK 474D OCF 820A2  
 MISS OAK CREEK 425Z  
 OCF 317D CRC LANDAU 263X2  
**MISS OAK CREEK 502H** R10536915 MISS OAK CREEK 403B  
 MISS OAK CREEK 233U OCF 439P14  
 MISS OAK CREEK 170P

CED	BW	WW	YW	MILK	TM	CEM	SC	REA	IMF	FT	Hfr Prg	Stay	Cow Wt
3.6	1.8	18	37	8	17	-	0.43	0.09	-0.01	0	2.09	-0.12	-2.97

*Excels in Performance • Enviroment Friendly • Stayability  
 Dam Calves Unassisted Yearly to Stay in Herd*

**Lot 19 OCF 587K BRANGUS K**  
**R10537264 Born: 2/5/22 PHN: 587K P Gen: 5**

TJM THREE D 302A CB FINAL CUT 924X  
**GR THREE D 803G5** R10415181 OAKS MS PATTON 302X3  
 MS GR SWIFT 803Z15 GR SWIFT 209W3  
 MS BRINKS UNITAS 803U21  
 TDR JOHN WAYNE 302R TJM JOHN WAYNE 44L  
**MISS OAK CREEK 499F** RR10537261 MB MS MOTASH 302N7  
 MISS OAK CREEK 578A OCF 56X  
 MISS OAK CREEK 355U

CED	BW	WW	YW	MILK	TM	CEM	SC	REA	IMF	FT	Hfr Prg	Stay	Cow Wt
4.2	1.2	23	46	5	17	-	0.77	0	-0.04	-0.014	5.09	1	4.69

*Excels in Performance • Enviroment Friendly • Stayability  
 Dam Calves Unassisted Yearly to Stay in Herd*

**Lot 20 OCF 580K BRANGUS K**  
**R10537235 Born: 2/1/22 PHN: 580K P Gen: 6**

OCF 561D OCF 915A80  
**OCF 464G** R10452186 MISS OAK CREEK 408Y  
 MISS OAK CREEK 445B OCF 399T BN  
 MISS OAKCREEK 194R  
 OCF 820A2 MR JLS SAVAGE 915W42  
**MISS OAK CREEK 441D** R10419312 MISS THOMAS 89J - 820T1  
 MISS OAK CREEK 437X OCF 503R  
 MISS OAK CREEK 566U

CED	BW	WW	YW	MILK	TM	CEM	SC	REA	IMF	FT	Hfr Prg	Stay	Cow Wt
6.1	0.5	11	29	8	13	-	0.3	0.12	-0.05	-0.006	1.64	0.43	-1.47

*Excels in Performance • Enviroment Friendly • Stayability  
 Dam Calves Unassisted Yearly to Stay in Herd*

**Lot 21 OCF 439K BRANGUS K**  
**R10522085 Born: 12/24/21 PHN: 439K P Gen: 3**

OCF 915A80 SKYHAWKS PRESIDENTE  
**OCF 332E** R10394630 MISS JLS ROSE 915X4  
 MISS OAK CREEK 403C OCF 576X  
 MISS OAK CREEK 525Z  
 OCF 810B OCF 805W  
**MISS OAK CREEK 734D** R10463396 MISS OAK CREEK 830W  
 MISS OAK CREEK 417Z OCF 439P14  
 MISS OAK CREEK 523L

CED	BW	WW	YW	MILK	TM	CEM	SC	REA	IMF	FT	Hfr Prg	Stay	Cow Wt
5.7	0.7	9	16	8	12	-	0.36	0.04	0.05	0.002	2.13	0.73	-1.67

*Excels in Performance • Enviroment Friendly • Stayability  
 Dam Calves Unassisted Yearly to Stay in Herd*

**Lot 22 OCF 447K BRANGUS K**  
 R10537055 Born: 1/17/22 PHN: 447K P Gen: 6

OCF 760F R10422255 TDR JOHN WAYNE 302R TJM JOHN WAYNE 44L  
 MISS OAK CREEK 423A MB MS MOTASH 302N7  
 OCF 438A BRINKS LAMBERT 468X  
 MISS OAK CREEK 517C R10537052 BRINKS BS 607L11 415X3  
 MISS OAK CREEK 595U MISS OAK CREEK 190R  
 OCF TRANSFORMER 27N14  
 MISS OAK CREEK 502P

CED	BW	WW	YW	MILK	TM	CEM	SC	REA	IMF	FT	Hfr Prg	Stay	Cow Wt
5.3	0.9	5	18	6	9	-	0.44	0	-0.02	-0.004	2.47	0.64	-3.96

*Excels in Performance • Enviroment Friendly • Stayability  
 Dam Calves Unassisted Yearly to Stay in Herd*

**Lot 23 OCF 558K BRANGUS K**  
 R10537150 Born: 1/7/22 PHN: 558K P Gen: 6

OCF 505G R10452250 OCF 915A80 SKYHAWKS PRESIDENTE  
 MISS OAK CREEK 421Z MISS JLS ROSE 915X4  
 OCF 557U  
 OCF 820A2 MISS OAK CREEK 44R  
 MR JLS SAVAGE 915W42  
 MISS OAK CREEK 501D R10537149 MISS THOMAS 89J - 820T1  
 MISS OAK CREEK 442Z OCF 557U  
 MISS OAK CREEK 465N

CED	BW	WW	YW	MILK	TM	CEM	SC	REA	IMF	FT	Hfr Prg	Stay	Cow Wt
4.8	1.2	12	28	9	15	-	0.46	0.23	-0.03	0.005	2.5	0.67	-2

*Excels in Performance • Enviroment Friendly • Stayability  
 Dam Calves Unassisted Yearly to Stay in Herd*



**Lot 24 OCF 772K BRANGUS K**  
 R10532564 Born: 2/22/22 PHN: 772K P Gen: 6

OCF FORAGER 352F R10462567 SKYHAWKS PRESIDENTE MR CR FRED 99/N26  
 MISS OAK CREEK 581D SVF-D BAR D MS ALICE  
 OCF 915A80  
 MISS OAK CREEK 575W  
 TDR JOHN WAYNE 302R TJM JOHN WAYNE 44L  
 MISS OAK CREEK 460G R10532561 MB MS MOTASH 302N7  
 BRINKS SINGLETARY 795U25  
 MISS OAK CREEK 93R

CED	BW	WW	YW	MILK	TM	CEM	SC	REA	IMF	FT	Hfr Prg	Stay	Cow Wt
4.8	1.3	18	36	6	15	-	0.7	0.11	0.07	-0.001	3.6	0.66	-6.76

*Excels in Performance • Enviroment Friendly • Stayability  
 Dam Calves Unassisted Yearly to Stay in Herd*

**Lot 25 OCF 559K BRANGUS K**  
 R10537151 Born: 1/7/22 PHN: 559K P Gen: 6

OCF 505G R10452250 OCF 915A80 SKYHAWKS PRESIDENTE  
 MISS OAK CREEK 421Z MISS JLS ROSE 915X4  
 OCF 557U  
 MISS OAK CREEK 44R  
 BRINKS LAMBERT 468X LAMBERT OF BRINKS 317R3  
 MS BRINKS LEAD TIME 468P39  
 MISS OAK CREEK 136A R10421614 OCF 227K  
 MISS OAK CREEK 68R MISS OAK CREEK 65G

CED	BW	WW	YW	MILK	TM	CEM	SC	REA	IMF	FT	Hfr Prg	Stay	Cow Wt
2	2	16	35	7	16	3.12	0.5	0.24	0	-0.003	2	0.73	-6.38

*Excels in Performance • Enviroment Friendly • Stayability  
 Dam Calves Unassisted Yearly to Stay in Herd*

**Lot 26 OCF 406K BRANGUS K**  
 R10537757 Born: 2/15/22 PHN: 406K P Gen: 5

OCF 501Z R10372081 OCF 535 OCF 504M  
 MISS OAK CREEK 500M MISS OAK CREEK 331G  
 OAK CREEK JK 529H  
 CHAPPELL GATE LINSEY  
 OCF 535  
 MISS OAK CREEK 424E R10537742 MISS OAK CREEK 500M  
 OCF POWERSURGE 34S  
 MISS OAK CREEK 579Y MISS OAK CREEK 461K

CED	BW	WW	YW	MILK	TM	CEM	SC	REA	IMF	FT	Hfr Prg	Stay	Cow Wt
3.8	1.7	50	56	5	30	-	0.32	-0.27	-0.04	-0.014	1.52	1.12	0.13

*Excels in Performance • Enviroment Friendly • Stayability  
 Dam Calves Unassisted Yearly to Stay in Herd*

**Lot 27 OCF 773K BRANGUS K**  
 R10536899 Born: 2/6/22 PHN: 773K P Gen: 5

OCF 566E R10395522 OCF 915A80 SKYHAWKS PRESIDENTE  
 MISS OAK CREEK 72T MISS JLS ROSE 915X4  
 OCF 520L  
 MISS OAK CREEK 29J  
 OCF 588D OCF 915A80  
 MISS OAK CREEK 464A  
 MISS OAK CREEK 419F R10536885 OCF 438A  
 MISS OAK CREEK 552C MISS OAK CREEK 568N

CED	BW	WW	YW	MILK	TM	CEM	SC	REA	IMF	FT	Hfr Prg	Stay	Cow Wt
3.3	1.9	12	26	8	14	-	0.6	-0.12	-0.18	-0.015	2.14	0.28	-5.27

*Excels in Performance • Enviroment Friendly • Stayability  
 Dam Calves Unassisted Yearly to Stay in Herd*

**Lot 28 OCF 330K BRANGUS K**  
 R10536923 Born: 3/24/22 PHN: 330K P Gen: 7

GR SWIFT 209W3 R10143304 LAMBERT OF BRINKS 317R3 LEAD GUN OF BRINKS 222K14  
 MS BRINKS GOOD FORTUNE 317M  
 MS BRINKS BRIGHT SIDE 209L11 BRIGHT SIDE OF BRINKS 789G5  
 MISS BRINKS NEWSDAY 209G9  
 OCF 495E OCF 915A80  
 MISS OAK CREEK 541H R10536922 MISS OAK CREEK 442A  
 OCF 335S  
 MISS OAK CREEK 221Y MISS OAK CREEK 233T

CED	BW	WW	YW	MILK	TM	CEM	SC	REA	IMF	FT	Hfr Prg	Stay	Cow Wt
4.6	0.9	21	41	5	15	3.19	0.45	0.25	0.05	0.005	2.67	-0.04	-5.25

*Excels in Performance • Enviroment Friendly • Stayability  
 Dam Calves Unassisted Yearly to Stay in Herd*

**Lot 29 OCF 309K** **BRANGUS K**  
 R10534747 Born: 2/27/22 PHN: 309K P Gen: 6

TJM THREE D 302A CB FINAL CUT 924X  
 GR THREE D 803G5 R10415181 OAKS MS PATTON 302X3  
 MS GR SWIFT 803Z15 GR SWIFT 209W3  
 MS BRINKS UNITAS 803U21  
 OCF 706E OCF 915A80  
 MISS OAK CREEK 442H R10534220 MISS OAK CREEK 335W  
 MISS OAK CREEK 413X OCF 4555  
 MISS OAK CREEK 465N

CED	BW	WW	YW	MILK	TM	CEM	SC	REA	IMF	FT	Hfr Prg	Stay	Cow Wt
5	0.6	23	44	6	18	-	0.77	0.12	-0.01	0.002	4.95	0.85	4.67

*Excels in Performance • Environment Friendly • Stayability  
 Dam Calves Unassisted Yearly to Stay in Herd*

**Lot 30 OCF 573K** **BRANGUS K**  
 R10537211 Born: 1/17/22 PHN: 573K P Gen: 4

OCF 915A80 SKYHAWKS PRESIDENTE  
 MISS JLS ROSE 915X4  
 OCF 557U  
 MISS OAK CREEK 148Z  
 OCF TARGET 8N2  
 MISS OAK CREEK 196M  
 OCF PHENOM 854G  
 OCF MS RJ 650-522F

CED	BW	WW	YW	MILK	TM	CEM	SC	REA	IMF	FT	Hfr Prg	Stay	Cow Wt
5.1	1.1	1	9	6	7	2.95	0.56	0.05	0.13	0.016	2.04	0.68	-1.78

*Excels in Performance • Environment Friendly • Stayability  
 Dam Calves Unassisted Yearly to Stay in Herd*

**Lot 31 OCF 545K1** **BRANGUS K**  
 R10537146 Born: 1/12/22 PHN: 545K1 P Gen: 3

OCF 561D OCF 915A80  
 MISS OAK CREEK 408Y  
 OCF 399T BN  
 MISS OAKCREEK 194R  
 LTD OF BRINKS 415T28  
 MS HD BRIGHT SIDE 263L  
 OCF 805W  
 MISS OAK CREEK 851W

CED	BW	WW	YW	MILK	TM	CEM	SC	REA	IMF	FT	Hfr Prg	Stay	Cow Wt
5	1	17	35	10	19	-	0.56	0.17	0.01	0.003	1.99	-0.14	-5.35

*Excels in Performance • Environment Friendly • Stayability  
 Dam Calves Unassisted Yearly to Stay in Herd*

**Lot 32 OCF 355K** **COMMERCIAL BRANGUS K**  
 Com BN Born: 3/2/22 PHN: 355K P Gen:

## Commercial Brangus Bull

**Lot 33 OCF 302K** **COMMERCIAL ANGUS K**  
 Com AN Born: 1/26/22 PHN: 302K P Gen:

## Commercial Angus Bull

**Lot 34 OCF 240K** **RED BRANGUS K**  
 RR10537738 Born: 2/23/22 PHN: 240K P Gen: 3

GR AUGUSTUS 548D3 SUHN'S AUGUSTUS 416Y14  
 MS GR SWIFT 548Y12  
 OCF 19X  
 MISS OAK CREEK 10X  
 OAK CREEK TARGET 2S  
 MISS OAK CREEK 118M  
 OAK CREEK'S GRANDSLAM D1  
 MISS OAK CREEK 40F

CED	BW	WW	YW	MILK	TM	CEM	SC	REA	IMF	FT	Hfr Prg	Stay	Cow Wt
3.5	1.2	29	52	6	21	-	0.45	-0.05	-0.07	0.004	1.65	0.71	-1.04

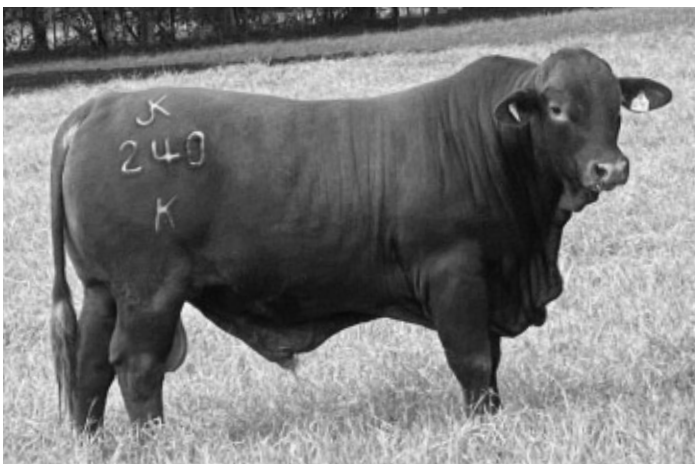
*Excels in Performance • Environment Friendly • Stayability  
 Dam Calves Unassisted Yearly to Stay in Herd*

**Lot 35 OCF 169K** **RED BRANGUS K**  
 RR10534219 Born: 1/14/22 PHN: 169K P Gen: 4

I H RUDDER 504Y2 CHIEF OF INDIAN HILLS 23P68  
 MS BRINKS ALI 504P12  
 MR. CENTER RANCH SHARPSHOOTER  
 MS BRINKS EASY STREET 535F58  
 OCF 576X OCF POWERSURGE 34S  
 MISS OAK CREEK 272D RR10534201 MISS OAK CREEK 108R  
 OCF 227K  
 MISS OAK CREEK 215F

CED	BW	WW	YW	MILK	TM	CEM	SC	REA	IMF	FT	Hfr Prg	Stay	Cow Wt
4.8	0.7	31	50	9	25	-	0.48	-0.07	-0.08	0.003	0.65	0.75	1.59

*Excels in Performance • Environment Friendly • Stayability  
 Dam Calves Unassisted Yearly to Stay in Herd*



**Lot 36 OCF 322K RED BRANGUS K**  
 RR10532386 Born: 3/18/22 PHN: 322K P Gen: 5

GR SWIFT 209W3 LAMBERT OF BRINKS 317R3  
 OCF 714H R10468192 MS BRINKS BRIGHT SIDE 209L11  
 MISS OAK CREEK 474D OCF 820A2  
 OCF 253C MISS OAK CREEK 425Z  
 OCF 110A  
 MISS OAK CREEK 1H RR10532364 MISS OAK CREEK 226Y  
 MISS OAK CREEK 109Y OAK CREEK TARGET 2S  
 MISS OAK CREEK 20N

CED	BW	WW	YW	MILK	TM	CEM	SC	REA	IMF	FT	Hfr Prg	Stay	Cow Wt
4.8	0.9	19	36	5	14	-	0.4	-0.07	0	-0.009	1.75	0.42	-2.67

**Lot 37 OCF 238K RED BRANGUS K**  
 RR10534796 Born: 2/1/22 PHN: 238K P Gen: 3

GR AUGUSTUS 548D3 SUHN'S AUGUSTUS 416Y14  
 OCF 8G RR10452137 MS GR SWIFT 548Y12  
 MISS OAK CREEK 60B OCF 19X  
 MISS OAK CREEK 10X  
 OCF 512A OCF 576X  
 MISS OAK CREEK 232D RR10419367 MISS OAK CREEK 520W  
 MISS OAK CREEK 95W OCF 227K  
 MISS OAK CREEK 214R

CED	BW	WW	YW	MILK	TM	CEM	SC	REA	IMF	FT	Hfr Prg	Stay	Cow Wt
5.6	0.5	19	36	5	15	-	0.39	-0.03	0.05	0	1.88	0.73	-0.3

*Excels in Performance • Enviroment Friendly • Stayability  
 Dam Calves Unassisted Yearly to Stay in Herd*



**Lot 38 OCF 74K RED BRANGUS K**  
 RR10534218 Born: 3/12/22 PHN: 74K P Gen: 4

OCF 915A80 SKYHAWKS PRESIDENTE  
 OCF 327F R10421911 MISS OAK CREEK 450D  
 MISS OAK CREEK 820A2  
 MISS OAK CREEK 67N  
 OCF 272B OCF 108Y  
 MISS OAK CREEK 112D RR10491275 MISS OAK CREEK 7S  
 MISS OAK CREEK 259A OCF 124U  
 MISS OAK CREEK 88W

CED	BW	WW	YW	MILK	TM	CEM	SC	REA	IMF	FT	Hfr Prg	Stay	Cow Wt
5.9	0.5	10	24	6	11	-	0.57	-0.04	0.03	0	1.65	0.52	-4.43

*Excels in Performance • Enviroment Friendly • Stayability  
 Dam Calves Unassisted Yearly to Stay in Herd*

**Lot 39 OCF 233K RED BRANGUS K**  
 RR10521965 Born: 12/20/21 PHN: 233K P Gen: 3

GR AUGUSTUS 548D3 SUHN'S AUGUSTUS 416Y14  
 OCF 8G RR10452137 MS GR SWIFT 548Y12  
 MISS OAK CREEK 60B OCF 19X  
 MISS OAK CREEK 10X  
 OCF 227B OCF 108Y  
 MISS OAK CREEK 39F RR10521964 MISS OAK CREEK 340W  
 MISS OAK CREEK 135A OCF 19X  
 MISS OAK CREEK 338U

CED	BW	WW	YW	MILK	TM	CEM	SC	REA	IMF	FT	Hfr Prg	Stay	Cow Wt
6.2	0	26	47	4	17	-	0.5	0.04	0.08	-0.001	1.96	0.8	-0.78

*Excels in Performance • Enviroment Friendly • Stayability  
 Dam Calves Unassisted Yearly to Stay in Herd*

**Lot 40 OCF 17K RED BRANGUS K**  
 RR10522159 Born: 11/10/21 PHN: 17K P Gen: 3

I H RUDDER 504Y2 CHIEF OF INDIAN HILLS 23P68  
 IH RUDDER 820F6 R10407989 MS BRINKS ALI 504P12  
 IH MS ABBY 820B3 IH BLACK BEAR 504X  
 IH MS CHIEF 820X15  
 OCF 56X OAK CREEK TARGET 2S  
 MISS OAK CREEK 113A RR10451187 MISS OAK CREEK 118M  
 MISS OAK CREEK 38W OAK CREEK TARGET 2S  
 MISS OAK CREEK 118M

CED	BW	WW	YW	MILK	TM	CEM	SC	REA	IMF	FT	Hfr Prg	Stay	Cow Wt
3.9	1.3	22	46	6	17	5.34	0.57	0.05	0	0	1.36	0.81	-1.73

*Excels in Performance • Enviroment Friendly • Stayability  
 Dam Calves Unassisted Yearly to Stay in Herd*

**Lot 41 OCF 216K RED BRANGUS K**  
 RR10522163 Born: 11/11/21 PHN: 216K P Gen: 4

OCF 512A OCF 576X  
 OCF 318G RR10471914 MISS OAK CREEK 520W  
 MISS OAK CREEK 103E OCF 227B  
 MISS OAK CREEK 48X  
 OCF 227B OCF 108Y  
 MISS OAK CREEK 378G RR10517848 MISS OAK CREEK 340W  
 MISS OAK CREEK 516E OCF 401B  
 MISS OAK CREEK 233U

CED	BW	WW	YW	MILK	TM	CEM	SC	REA	IMF	FT	Hfr Prg	Stay	Cow Wt
4.1	1.3	11	25	6	12	-	0.33	-0.12	0.01	-0.001	1.32	0.92	0.2

*Excels in Performance • Enviroment Friendly • Stayability  
 Dam Calves Unassisted Yearly to Stay in Herd*



# TERMS AND CONDITIONS

---

Except for those stated in the below terms and conditions, there are no warranties, either expressed or implied, as to the merchantability or fitness for a particular purpose with respect to the cattle being sold at this auction. The warranties and guarantees set forth in the "Terms and Conditions" are in lieu of all other warranties, either expressed or implied, and the remedies provided therein shall be the sole and exclusive remedy of the buyer, or any party through buyer, for any breach of warranty or guarantee therein provided, and all other obligations or liabilities.

**1. BIDDING:** Each animal will be sold to the highest bidder without reserve. The auctioneer in charge will settle any disputes as to bids, and his decision shall be final.

**2. TERMS:** All terms are cash or check. Settlement must be made to the clerk at the conclusion of the auction before any cattle will be released from sale the sale premises.

**3. PURCHASER'S RISK:** Each animal becomes the risk of the purchaser as soon as sold, but will not be delivered until settlement has been made.

**4. HEALTH:** All animals where possession is sold are eligible for interstate shipment except as otherwise noted. All bulls have passed a fertility test. A health certificate will be furnished.

**5. ANNOUNCEMENTS:** Announcements from the auction box will take precedence over the printed matter in this catalog. All cattle will be sold by lot numbers as announced by the auctioneer.

**6. BREEDING GUARANTEE:** **A.** All animals are guaranteed to be breeders with the exception of (1) injury or disease occurring after sale; (2) negligence or willful misconduct on the part of the purchaser. Bulls losing more than 20% of their body weight will be excluded from the guarantee.

**B.** Any female is considered a breeder if she is pregnant at the time of the sale and/or she has a calf at side.

**C.** Safe in calf females have been examined by a competent veterinarian and are so guaranteed. **D.** Served females are believed to be in calf but are not so guaranteed.

**E.** Pasture-bred females have been exposed but are not guaranteed to be in calf. **F.** Open females have not been served and are so guaranteed.

**7. OPTIONS AND PRIVILEGES OF RETURN OR ADJUSTMENT:** **A.** All claims for adjustment or refund must be made in writing within six (6) months of the sale date.

**B.** Any animal that has not proven itself a breeder within the time limits specified above, if in healthy condition, may be returned to seller at buyer's expense. The seller reserves the right and privilege of trying for a period of six (6) months to prove the animal a breeder. If proven a breeder, the animal will be returned at buyer's expense. Should the animal fail to breed, the buyer, at his option, may either demand return of the purchase price or replacement of the animal with another of equal value. **C.** Any animal returned must have a veterinarian's certificate that it is healthy and free of Bangs and Tuberculosis.

**9. RIGHTS AND OBLIGATIONS:** **1.** The above terms and conditions of sale shall constitute a contract between the buyer and seller of each animal and shall be equally binding upon both. **2.** Animals resold following purchase in this sale shall constitute a separate transaction, and the rights and obligations of the two parties connected thereto are not covered by the terms and conditions of this sale. **3.** All persons who attend the sale do so at their own risk and the owners nor any person connected with the management of the sale or sale facility assume any liability, legal or otherwise, for any accidents which may occur.



# LiveAuctions.TV 2.0

## HERE'S HOW IT WORKS

Go to [www.LiveAuctions.tv](http://www.LiveAuctions.tv). Please note that you do NOT need an account to watch the auction, but you do need to register an account and request a buyer number if you wish to bid. If you have not created a new account since September 1<sup>st</sup>, 2020 you will need to click "Register" in the top right corner of the homepage and create a new account. Once you have completed the form on this registration page and hit the "Register" button you will receive an e-mail with a place to click on to verify you have entered a valid e-mail address. Once you have completed this registration process, find the auction you are interested in on the homepage and click on it (sales are listed in chronological order). You should then see a box that says Login. Now that you have an account with LiveAuctions just type in your E-mail Address and Password. You will now see a hyperlink at the top that says "Request a Buyer Number". The first time you request your first buyer number on LiveAuctions it will send you a text message with a verification code in it. Type the code from the text message into the area requiring it and you will then see your name along with a buyer number listed at the top of the webpage where the live video is and you will be able to bid. You will only have to complete this two-step verification process one time. After that you will be able to immediately request a buyer number on any auction without verification through an e-mail or text message again.

LiveAuctions no longer requires an app. If you wish to view/register/bid on a smartphone just type LiveAuctions.tv in whatever web browser you use. The registration process is the same as it is on a desktop computer, but the website is built mobile friendly. Click on the three lines in the top right corner to access the menus.

**Bidders who are successful in making purchases will be contacted by the ranch after the auction to settle payment and discover your shipping plans.**

**If you need help registering to bid or to view the auction please call Technical Support at (682) 816-4900 or e-mail us at [TechSupport@LiveAuctions.tv](mailto:TechSupport@LiveAuctions.tv).**



# UNDERSTANDING COW PRODUCTION AND FRAME SIZE

## *Importance of Efficiency and Benefits of Moderate Framed Cattle*



**COW-CALF PRODUCTION IS BASICALLY A MANUFACTURING PROCESS**, turning grass into high-quality, edible protein for which there is a substantial and critical demand. Just like a 100-watt light bulb uses more energy than a 60-watt bulb, large cows require greater energy input than moderate-framed cows.

Since larger cows have a higher maintenance energy requirement than moderate framed cows and because they operate in a grazing environment for much of the year, they satisfy that higher energy requirement through higher dry matter intake. The larger cows simply consume more forage and have higher associated feed costs. An accurate way to evaluate individual cow performance efficiency is the weaning weight of her calf relative to her mature weight. The rancher's goal might be a calf's weaning weight of 50% of the cow's weight and that could be a benchmark for culling a cow.

There is no question that the annual variable costs for a large cow are higher than for a moderate-framed cow. It is estimated that the annual dry matter intake increases by approximately 550 pounds and supplement costs increase by \$15 - \$20 for every 100 pounds of increase in body weight. The question becomes, can the larger cow wean a sufficiently heavier calf to offset the increased costs?

High on the list of priorities is producing more efficient cattle by using the right kind of bulls to produce more moderate-framed cattle. Oak Creek Farms True Brangus and Red Brangus cattle are developed on forages, plus Brangus is a breed known for good maternal traits that produce cattle with excellent replacement heifers."

Forages also aid in fertility, increasing a bull's productivity by one to three breeding seasons and enhancing the bull's libido resulting in a bull that is not overly conditioned and is in excellent breeding condition

Cattle able to thrive, be cost-efficient and grade well, plus pounds of beef weaned, is what the commercial cattleman wants.





# DNA PROFILING AT OAK CREEK FARMS

## *Technology Used for Selecting Beef Genetics*

**JOHN AND CAROLYN KOPYCINSKI BELIEVE THAT DNA PROFILING CAN HELP THEM EFFECTIVELY IN SELECTION DECISIONS.** "I cull up to 25% of my cow herd each year," Kopycinski says. "The top 75% stay." He keeps all his top females for breeding and to produce predictable, easy-fleshing, fertile bulls that will be an asset to bull customers. He markets his forage-developed bulls in annual production sales.

Kopycinski adds that the DNA test for hair coat color helps him make mating decisions in a herd where he maintains black Brangus and Red Brangus. Now he can know, for example, if a black-coated animal is homozygous black and therefore will transmit only the black gene to his progeny.

Kopycinski says he is pleased so far with the similarity he has seen between the genetic DNA profiling he has done and the phenotypic expression of the animals he's witnessed in the pastures. DNA Profiling test which measures carcass traits measuring fat thickness, yield grade, ribeye area and hot carcass weight. "I'm looking for cows that will be good keepers."

Above all, Kopycinski is using genetic marker data in perspective. It cannot replace the work of the breeder, the eye for balance and function he says. However, it is an invaluable tool that adds to the breeder's base of knowledge about how his animals will perform.

Kopycinski thinks overemphasis on any technology can lead a breeder to wrong conclusions. For example, he says experience tells him selecting young bulls with too much reliance on ultrasound readings can lead to slower-maturing animals that reach sexual maturity at a later age.

That earlier-maturing bull - maybe a bull with higher libido - is already in full rut, looking over the fence or down the road at those females," Kopycinski says. "He's busy thinking about breeding instead of eating and he may put on less weight and less muscle, but in time catches up with the later-maturing bulls.

Kopycinski now has over 50 years of experience breeding cattle, but he says you never stop learning. "I always keep in mind what an old cattle breeder told me years ago that genetics is a science that can make a fool out of the smartest man."





**Philips Veterinary  
Hospital 5375 Highway  
290 East  
Brenham, TX 77833  
979.277.1118**

Oak Creek Farms has a Spring and Fall Herd Health protocol for their cattle recommended by Philips Veterinary Hospital. The health program was designed for these cattle to be moved interstate. All the bulls and heifers in the sale were evaluated for structural correctness. The heifers in the sale had their reproductive tracts checked by ultrasound. All bulls passed their breeding soundness evaluations.

A handwritten signature in black ink, appearing to be the initials 'AS' followed by a long horizontal stroke.

***All bulls are forage developed***

**Health Protocol for Bulls:**

**Fall:**

All bulls have been P. I. tested

Calfhood vaccines:

Weaning: Zoetis One shot, Synanthic Oral Suspension Dewormer

Two Weeks post- weaning: Zoetis One shot, Calavary 9 blackleg,

**Spring:**

Ivomec Plus Injectable Dewormer, Synanthic Oral Suspension Dewormer,  
Zoetis Inforce 3, Zoetis Cattlemaster Golf FP 5 & Multimin

***All heifers are forage developed***

**Health Protocol for Heifers:**

**Fall:**

Brucellosis vaccinated

P.I. tested

Calfhood vaccines:

Weaning: Zoetis One Shot, Synanthic Oral Suspension Dewormer

Post Weaning: Zoetis One Shot, Cavalry 9 Blackleg

**Spring:**

Synanthic Oral Suspension Dewormer & Ivomec Plus Injectable Dewormer

# Through the Years...



# OAK CREEK FARMS

**K**

*Forage Developed Fall Brangus Bull Sale*

**K**



**These heifers sell!**



***We are in our eighth year with no fly treatment! These are true environmentally friendly cattle!***